

CSE event resources

Supporting community energy projects

A guide to the resources that you can borrow or hire from CSE for community events and activities and how to go about booking them out.

Models and demonstrator kits

Model house

The model house is perfectly to scale and shows a whole range of low carbon technologies that can be used in the home, from low cost options such as draught excluding door snakes and heating controls through to more expensive improvements like wall insulation and solar panels.



The PlanLoCaL model

This model town can be used for community engagement events and discussion around planning and development for a low-carbon future. It features all the renewable energy technologies that a community could consider. For more details about the model, accompanying resources, and how to go about hiring it see www.planlocal.org.uk/pages/the-model



Wall insulation models

CSE has designed a set of three small models that can be used as a visual prompt to explain how the different options for cavity wall insulation, internal and external wall insulation work in practice. There are information sheets to go with each model, which can also be used as prompt sheets for talks or demonstrations.



Insulation materials

This display showcases a range of insulation materials that people can touch and feel, including samples of different types of loft and wall insulation, boxes of the beads that are used to fill cavity walls and 'non-standard' options like sheep's wool and flexible internal lining. Ask us for our list of manufacturer contact details if you want to assemble your own kit instead.



Heating controls display

A digital programmer, a mechanical programmer, a room thermostat, a thermostatic radiator valve and night storage heater controls to be used as an aid to explaining how to set up a heating system to maximise its efficiency. They come in an attractive display case.

Our factsheets on heating controls and night storage heaters can be used alongside this display. Download them from www.cse.org.uk/advice-leaflets or contact us for copies.



Solar PV Demonstrator

A solar panel mounted at 30 degrees and connected to a small battery and generator. Electrical equipment, such as a small fan, can be attached via a USB port. The panel even works indoors as long as the battery is fully charged.



Low energy bulb display

This plug-in display can be used to show the range of low energy bulbs currently available, with space for different size bulbs of different brightness levels. There's even a dimmer switch.



Fun & games

Giant snakes & ladders

A large vinyl energy based snakes & ladders game to be used at indoor and outdoor events. To make it more topical, you can combine this with an energy quiz: you only get to throw if you get the answer right.



Solar boats

Kit for children to build their own solar powered boats as part of a supervised workshop. Contact us for an information sheet.



Solar spinning plates

Kit for children to build their own solar spinning plates as part of a supervised workshop. Contact us for an information sheet.



Badge maker

For brightening-up stalls and a bit of hands-on fun, this is an activity to engage children. You can purchase the kit needed to make badges from us, and we can provide the instructions. .



Energy generation game

This game can be used by adults or children to discuss energy saving options within the home or to help plan actions to reduce carbon across a whole community.



Leaflets and posters

Energy advice leaflets

CSE's ever-expanding list of energy advice leaflets cover many aspects of domestic energy use and are aimed at the general reader. They are available as PDF downloads from www.cse.org.uk/energy-advice-leaflets. Small quantities of printed leaflets are available free to CSE's local partner organisations and to community groups in Bristol and Somerset. And they are available at a small charge to local authorities, housing associations and similar organisations.

Topics covered include:

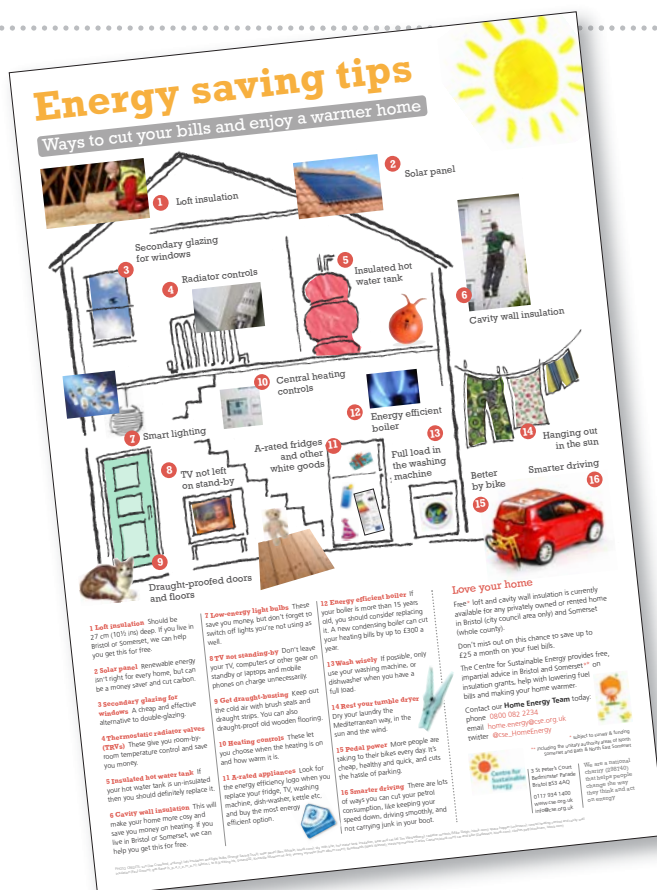
Cavity wall insulation, Central heating controls, Damp and condensation, DIY draught-proofing, Economy 7, Feed-in tariffs, Getting the best deal from your energy supplier, Lighting, Loft insulation, Making the most of your solar panels, Reading your gas or electricity meter, Room heaters, Renewable Heat Incentive, Secondary glazing, Solid-wall insulation, Smarter driving, Understanding your electricity bill, Understanding your gas bill, Using your night-storage heater, Upgrading your boiler, What uses watt: how much electricity am I using?, Rent-a-roof pv schemes



TIP: As a re-usable event resource for members of the public and volunteers staffing stands you could keep reference copies of these information sheets in a weather-proof folder. This could save on printing costs as well as ensuring that anyone manning a stand has a resource to hand to help with answering questions.

Tip-house poster

We also have an A3 poster showing top tips for saving energy in the home, downloadable available from CSE in printed format.



Draughtproofing packs

Draughtproofing packs

We can put together draughtproofing kits to give out at community events, or to use in training sessions (see www.cse.org.uk/news/view/1588). Each bag contains a letterbox cover, a door brush, draught seals and a draught-proofing fact sheet. We can provide free guidance on putting together your own kit, or can produce bespoke kits for you at an agreed unit cost. Please enquire for details.



How to hire CSE's resources

Our **models and demonstrator kits** are available for hire at a cost of £25 per item to community groups and £50 per model to local authorities or private businesses. We charge this small fee to cover our administration and insurance costs.

All models are transportable by car (though you will need to ensure you have adequate boot space) and can be picked up from CSE's offices in Bristol. Alternatively we can arrange to deliver them to you by courier at an additional cost.

NB. The PlanLoCaL model is dealt with separately. See www.planlocal.org.uk/pages/the-model for hire and delivery costs.

Please be aware that CSE staff often attend events with these resources and will have priority booking of the models and other kit.

Organisations hiring the models should be aware that CSE's insurance covers the use of the models by groups. Models are loaned out on the understanding:

- 1) That they are handled and treated with care,
- 2) That they are returned by the date and time agreed with CSE, and
- 3) That they are not left unattended while on public display

We suggest that you don't borrow all the models at once as they would take up a lot of room on your display. Ask if you need exact dimensions for the models. Each of the large models has its own carrying case with handles. Please observe health and safety guidance when lifting and carrying the models.

Many of these resources can be used as the basis for workshops, hands on activities, quizzes, talks and presentations. Ask if you need ideas or templates.

If you are interested in hiring the models, please email **communities@cse.org.uk**. We will check availability, confirm invoicing details with you and make the delivery arrangements.

You can also buy your own sets of all of these models and resources through CSE. Contact us for more details.



3 St Peter's Court
Bedminster Parade
Bristol
BS3 4AQ

0117 934 1400
info@cse.org.uk
www.cse.org.uk
charity 298740

The Centre for Sustainable Energy is a national charity that helps people change the way they think and act on energy.