

# energise

Tackling the threat of climate change and ending the misery of cold homes

## Inside Energise ...

### 2 Research & Analysis

- Establishing the evidence base for planning a low carbon future
- A tool for local authorities to track carbon cutting

### 3 Community

- 'CAFe' becomes 'Green Communities'



- Helping local communities benefit from wind energy
- Helping communities engage with the planning process

### 4 30th anniversary

- Switched on since 1979

### 6 Renewable Energy

- Support for planners continues
- [planningrenewables.org.uk](http://planningrenewables.org.uk) – now new and improved
- CSE helps National Trust choose biomass for Castle Drogo

### 7 Advice

- From flu-jab clinics to prisons, CSE is out-and-about
- CSE staff 'on air' to discuss health effects of fuel poverty



CSE 30th anniversary  
**Switched on since 1979**

## UK's new Low Carbon Transition Plan – is it fair?

CSE helps Government understand distributional impacts of its climate policies – who pays and who gains?

When Ed Miliband was appointed as Secretary of State for the Department of Energy and Climate Change (DECC) in October 2008, he said: "My job is to make sure our policy on climate change is fair." Nine months later, in July, he launched the UK's Low Carbon Transition Plan with research from CSE at the heart of its analysis of the impact on household fuel bills.

Simon Roberts, CSE's Chief Executive, explained: "It's really important we understand how the costs and benefits of meeting the UK's climate change targets are shared between everyone. That's why we've been working with DECC since the beginning of 2009 to help them develop their capacity to model and analyse these distributional impacts."

The Low Carbon Transition Plan is a substantial document that sets out how every area of the economy – from energy generation to land use, and transport to industry – may be transformed in response to the threat of climate change.

As the report notes, the Government's package of policies and proposals is likely to have a financial impact on UK households, most significantly through increases in energy bills.

The annex draws on research conducted on DECC's behalf by CSE (see pages 73-75 at [tinyurl.com/UKLCTPanalysis](http://tinyurl.com/UKLCTPanalysis)). This found that the increases in bills will be spread unevenly among different types of household. Higher income households will face a greater *absolute increase* in their bills, but this represents a much smaller *proportion* of their income than for lower income households, who will feel the increase more.

CSE's analysis also demonstrated that the most significant difference in the impact on energy bills is between those households that take up insulation and renewable heat measures and those that do not. In other words, if the programme of domestic energy saving measures is accelerated, the distributional impact of the Government's package of policies and proposals will be less.

Simon Roberts added: "There's evidence that people's willingness to curb their own carbon emissions is significantly affected by their sense of how others will act and how 'fairly' the burden is shared by their neighbours. Our work for DECC has started to reveal the distributional consequences of current policies. The next step is to refine the analysis so that we can point to the policy options that make the UK's climate policies fairer."



Simon Roberts: "We must not forget that high-income households generally contribute far more carbon emissions than low-income ones."

### London event

CSE will explore the issue of fairness in UK climate policy more fully at an event in London on 30 November.

Details at [www.cse.org.uk/thirty](http://www.cse.org.uk/thirty)



## CSE helps to develop tool for local authorities to track carbon cutting

A tool developed by the Energy Saving Trust with input from CSE is now available to help local authorities keep track of their actions to curb their per-capita CO<sub>2</sub> emissions in line with central government guidelines (known formally as national performance indicator NI186).

TrACE (Tracking Actions on Carbon Emissions) is aimed primarily at English local authorities. It provides a simple way for them to record evidence of the activities they undertake to achieve CO<sub>2</sub> savings across domestic, transport and business sectors in their areas.

TrACE has undergone extensive piloting and received positive feedback from the local authorities involved. It is hoped that other bodies, such as the Audit Commission and government departments, will accept TrACE as a standard method for reporting carbon-cutting activity.

The same team has also developed a database that brings together local authority data with housing, economic, demographic and CO<sub>2</sub> emissions data. The aim is to make comparison and benchmarking of local authority performance more effective and identify those actions which make most difference at local level to cutting carbon.

TrACE is available for download at the Energy Saving Trust website: [tinyurl.com/mezt3l](http://tinyurl.com/mezt3l)

# Establishing the evidence base for planning a low carbon future

## Local authorities task CSE to lead key studies

The Centre for Sustainable Energy is helping local councils meet new planning-policy requirements recently handed down from central government. These requirements oblige local authorities to establish the 'evidence base' on which their own policies and targets for renewable energy and low-carbon development can be based.

After winning stiff tender competitions, CSE took the leading role in a study for Bristol City Council and is also leading a study for five local authorities in West Sussex.

The Bristol study (published in June 2009 and downloadable from the council's website: [tinyurl.com/nox4tq](http://tinyurl.com/nox4tq)) looked at opportunities and constraints in the city for renewable, sustainable and low carbon energy supply. Like all other councils in England and Wales, Bristol was required to do this by the Department for Communities and Local Government, in order to have a sound underpinning for planning policies relating to climate change and energy.

It includes detailed heat demand mapping to demonstrate the potential for the planning system to bring forward low-carbon community and district-heating solutions.

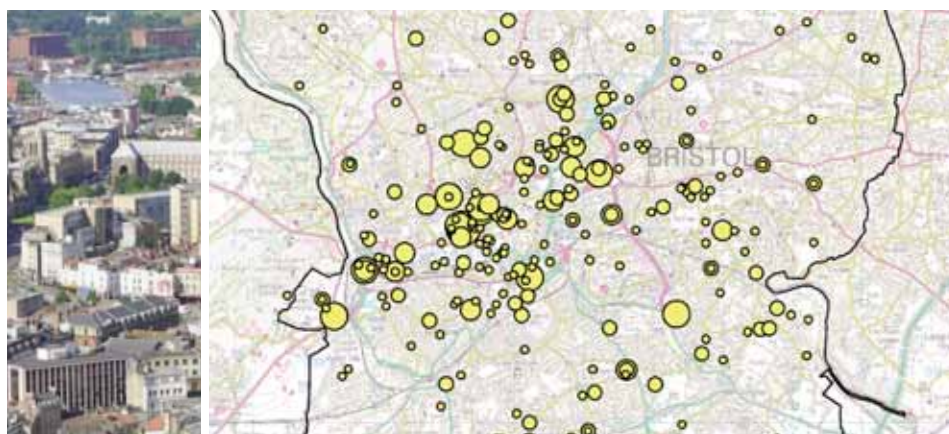
The on-going West Sussex project, jointly commissioned by the district councils of Arun, Chichester, Horsham, Mid Sussex and Worthing, aims to assess opportunities for increased use of renewable and low-carbon energy across the study area, which covers around 90 per cent of the county.

Janine Michael, Head of Development at CSE, said: "These are fantastic opportunities for CSE to use our technical knowledge, GIS analysis capabilities and planning know-how in partnership with other expert organisations. We hope our pioneering approach will ensure that future local planning policies are both as robust and as ambitious as possible."

- Contact [janine.michael@cse.org.uk](mailto:janine.michael@cse.org.uk) for further information on how CSE can help local authorities meet their planning policy obligations



Worthing (above) is one of the West Sussex councils that has commissioned a study from CSE. Below, the city of Bristol (left) and a map (right) showing the council's electricity use in buildings such as schools, administration offices and libraries.



## CSE wins big award for communities work

CSE has been awarded £500,000 from CLG's Third Sector Empowerment Fund for a three-year programme that will help communities to plan their low carbon future.

CSE's Chief Executive, Simon Roberts, said: "We see a huge disconnect between the challenge of tackling climate change at local level, the interests of local communities, and the formal processes of developing local planning policy. We're aiming to tackle this head on with this new programme that will try to tie these different elements together."

Full details of the programme are being finalised and will be announced shortly.



## Helping local communities benefit from wind energy

Alongside the launch of the UK Renewable Energy Strategy in July, the Department of Energy and Climate Change (DECC) has published an updated version of CSE's Toolkit for Delivering Community Benefits from Wind Energy Development.

Originally developed in 2007 for the Renewables Advisory Board by a team led by CSE, the Toolkit is designed to help local planning authorities, communities and wind energy developers engage more effectively with each other and make the most of the opportunities represented by local wind energy developments. It's recently been updated by CSE and published on the DECC website ([tinyurl.com/mshlg](http://tinyurl.com/mshlg)).

# CAfE closes ... but 'Green Communities' steps in with improved programme

After seven years of pioneering work, Community Action for Energy (CAfE) gives way to a new initiative from the Energy Saving Trust, the 'Green Communities' programme.

At an exclusive event in London last month, Energy Minister Joan Ruddock officially launched the Energy Saving Trust's new initiative, Green Communities.

The project builds on the work of Community Action for Energy (CAfE) which was initially developed by CSE and others in 2002. This programme has reached thousands of communities in that time to help them embed sustainable energy priorities into their local projects and activities. CSE will continue to manage the new Green Communities initiative on behalf of the Energy Saving Trust.

Attendees at the event at London's Savoy heard how Green Communities aims to create a 'step-change' in support for communities by offering an integrated

package of advice, expert support and funding.

There are currently 4,000 members of the Green Communities network and this number continues to grow as more people become interested in starting energy projects in their community. Membership of the scheme is free and entitles people to a number of benefits including:

- unique training courses and workshops
- a database of community energy projects
- regular newsletters and e-news updates
- a free annual conference
- information about funding
- support from a panel of experts
- community bursaries to cover costs of the small outgoings of community projects
- a website packed with resources

To find out how Green Communities can help, visit [www.est.org.uk/community](http://www.est.org.uk/community) or contact one of the project's advisors directly by freephone on 0844 848 0077 or email at [greencommunities@est.org.uk](mailto:greencommunities@est.org.uk)

## Green Communities Conference

The ever-popular conference will be in Liverpool this year on Wednesday 25 November 2009. The theme will be 'Turning ideas into action'.

Previous conferences have been held in Oxford, Newcastle, Birmingham, London, Manchester and Bristol.

More information will be available shortly at [www.est.org.uk/community](http://www.est.org.uk/community)



Above, an example of the fun new artwork that helps bring the Green Communities programme to life. Right, head of the Energy Saving Trust, Philip Selwood at the re-launch in London



# Switched on since 1979

CSE has turned 30, and we're going strong

This year, 2009, we're celebrating our 30th anniversary. And although we're a forward-thinking organisation, we can't resist taking a quick look back to 1979 – where we see some surprising parallels ...

At home there was concern over energy costs, fears for the economy and an embattled government. Abroad there were bail-outs of the motor industry in the USA, protests on the streets of Iran, and an insurgency in Afghanistan. And the entertainment pages of newspapers were all about Michael Jackson, whose new album 'Off the Wall' was the pop music event of the year.

So, has anything changed in the 30 years since the Centre for Sustainable Energy was born?

Actually, there are signs of hope: new commitments to radical cuts in UK carbon emissions; a major push on renewable energy; an enhanced role for communities in the shift to a sustainable energy future.

Simon Roberts, CSE's Chief Executive said: "We are using this year to share our 30 years' experience of inventive and influential initiatives, showing how the best of our work can stimulate and support the sweeping transformation needed to tackle climate change and end fuel poverty."

And looking back on the moment a generation ago when four far-sighted people got together to develop the idea

which became CSE, he added: "Without this initial spark, CSE would not now be in the position where we can help to turn these national commitments into practical, deliverable initiatives and to support communities and local authorities to realise their ambitions for a low carbon future."

To mark our anniversary we held a well-attended conference in Bristol (see right) to look at local energy initiatives, and are planning a second, policy-focussed event in London exploring the issues associated with 'energy justice' and the distributional impacts of climate policies.

Thanks to everyone who sent messages of support and goodwill, and here's to the next 30 years!

● To mark our 30th anniversary we produced a small book outlining our work and values and describing what we think makes us special. It's called 'Switched on since 1979' and you can request a free copy from [matthew.rees@cse.org.uk](mailto:matthew.rees@cse.org.uk) or download a pdf from [www.cse.org.uk](http://www.cse.org.uk). And back in 2004 we marked our 25th anniversary with a booklet called 'Shaping a Sustainable Energy Future'. This detailed seven lessons we had learned (and which we still struggle to apply). It's been one of our website's most popular resources, with thousands of copies downloaded.



## A new imagery

To add life, colour and meaning to the material we planned to produce in our 30th anniversary - and in subsequent years - we commissioned a set of designs from Bristol-based illustrator Danny Jenkins. Designed to work across all our publicity material (e.g. print, website and display) the illustrations depict the five sides of our work (from top to bottom): doing what's needed in our locality; empowering others to act; nurturing new ideas; building understanding and learning lessons; influencing policy and practice

## Energy wave:

This illustration comes from our book, 'Switched on since 1979'. It shows how we've developed over the past 30 years and lists many of our most significant projects.



This is when we were founded as the Urban Centre for Appropriate Technology...

This is when we started the Bristol Energy Centre ...



# Renewable energy expertise for planners

The expert support network run by CSE for the benefit of planners working on renewable energy planning applications will receive continued funding from Government

Following a successful initial pilot earlier this year, CSE has now received funding from the Department of Energy and Climate Change (DECC) to extend the **expert support network** it offers through its Planning Renewables programme.

Aimed at local authority planning officers in both policy and development control, the expert support network provides free advice, information and guidance from a suitable renewable energy specialist on specific issues relating to renewables.

Planners are able to submit their queries through the Planning Renewables website: [www.planningrenewables.org.uk](http://www.planningrenewables.org.uk) (see box, right). Following an initial assessment, CSE will organise up to one day's worth of an expert's time to deal with queries requiring in-depth research, clarification and response. Typically, the support is delivered via telephone and e-mail. Where suitable, the response to each query is also then available to inform the development of Frequently Asked Questions guides.

Simon Lewin, Head of Technical Consultancy & Training at CSE, said: "We are pleased that we are able to continue

delivering the pilot network as a means of ensuring the right skills and knowledge are available to the planning community to support the swifter delivery of renewables. The initial pilot showed that the network is a great way for the planning community to ask ad-hoc questions and seek impromptu advice from subject matter experts about specific renewable energy developments, issues or situations."

The extension of the expert support network is part of a wider programme to support the planning community on renewable energy and low carbon planning which CSE will continue to oversee and develop on behalf of the Government over the course of this financial year.

This includes a series of workshops for planners and councillors on planning for wind power, biomass energy and evidence base for renewables planning policies. There will also be a number of technical briefings sessions and webcasts on topics such as planning conditions and landscape and visual impact.

• For more on the expert support network and our wider Planning Renewables work, contact [simon.lewin@cse.org.uk](mailto:simon.lewin@cse.org.uk)

## Planners go on-line for renewable energy information

Planners and councillors across England have been benefitting from an updated and redesigned Planning Renewables website following a major overhaul of the site earlier this year.

A wealth of new information and resources have been added including scientific reports, case studies, government planning guidance and surveys making the site even more comprehensive. Visitors to the redesigned site have found the navigation simpler, and the design improved.

Developed in cooperation with DECC (see main story, left), and the Department for Communities and Local Government (CLG) the website provides up-to-date information about the development of renewable energy projects and covers all renewable technologies from wind and biomass, through to solar power, hydro and waste-to-energy.



[www.planningrenewables.org.uk](http://www.planningrenewables.org.uk)

## It's back! CSE's popular renewable energy course returns for 2009-10

Great news for anyone who wants to know about household and community-scale renewable energy technologies; CSE is running another programme of the popular one-day training course 'Renewable Energy Essentials'. The course introduces and explains the common renewable energy systems: solar water heating, biomass heating, heat pumps, solar PV, and small-scale wind. Courses are planned in venues in four locations.

- **Bristol:** 5 November 2009, 9 March 2010 and 17 November 2010
- **London:** 9 December 2009 and 20 May 2010
- **Birmingham:** 26 January 2010 and 23 September 2010
- **Taunton:** 16 June 2010

The first Bristol date is confirmed, the rest are provisional, so please check for full details and updates on [www.cse.org.uk/ree](http://www.cse.org.uk/ree). For more information, please contact Anna Watts on 0117 934 1429 or [anna.watts@cse.org.uk](mailto:anna.watts@cse.org.uk)



**Biomass in Drogo:** With CSE's help, a National Trust castle in Devon has joined the low-carbon revolution. The new 400kW biomass boiler, which was fired up in June, is expected to save Castle Drogo, near Exeter, around £40,000 a year in fuel and was installed following a feasibility study carried out by CSE. For more details, see [www.cse.org.uk/news](http://www.cse.org.uk/news)

# Delivering energy advice at a local level

Flu-jab clinics, prisons, helicopter factories and local radio stations

**A**s ever, CSE's specialist energy advisors have been busy reaching out across Bristol and Somerset and bringing the energy saving message to as many people as possible.

In many cases this has involved working with the support of local authorities across the area to enhance the energy advice services available from the region's Energy Saving Trust advice centre.

As usual, we are keen to engage individuals and families that are at risk of, or already suffering from, fuel poverty and for whom it is vital that advice on energy saving in the home can be accessed easily. But this year the focus of the advice centre has been widened to encompass not just the 'fuel poor' but the 'fuel rich' as well whose carbon emissions are generally higher.

And not only are we re-visiting some of the usual places (farmers' markets, local festivals, hospital waiting rooms etc); we've been looking at some more unusual venues as well.

## 'Energy cells'

In late spring, our advisors could be said to be 'doing time' after visiting staff at Bristol's prison.

Here we gave out free energy-saving light bulbs, provided prison staff with advice and information and promoted Bristol City Council's grant scheme, BEES (Bristol Energy Efficiency Scheme) which offers free loft and cavity wall insulation to any private household in the city that includes a child or someone over 60.

The site visit was initiated by the site manager from HMP Horfield who hoped that the energy-saving habits adopted by his staff at home would lead to lower energy bills for the prison.

Another group of employees that received a visit was the engineers, fitters and admin staff of the Westlands helicopter factory in Yeovil, Somerset.

## 'Fuel poverty'

Beyond the workplace, our advisors have made a concerted effort to reach people directly at risk of fuel poverty.

Louise Rutterford, who is a project

manager in CSE's advice and community team, explains. "In Somerset for example, we focused our efforts on helping people for whom fuel poverty is a serious risk. One such group is the elderly, many of whom tend not to seek help even when they struggle to afford to heat their homes. A good place to meet older people, is the local flu-jab clinic, where the talk is all about keeping warm and paying fuel bills. This was especially true earlier this year when the weather turned particularly cold, and could become even more important if the levels of flu are as high as projected this autumn and winter."

But it's not just older people, as Louise explained. "We also provided advice to residents with young families at toddler groups through sharing information about the grants that are available to help to insulate their home. This was alongside explaining the behavioural changes they can make to save money."



CSE's Karen Lansdown explaining the benefits of low-energy light bulbs.

## A wet day at the Harbourside

As in other years, CSE advisors working for the Energy Saving Trust advice centre joined the throngs at Bristol's popular Harbourside Festival this summer - and despite the atrocious weather we had a busy day passing on the energy efficiency message to scores of people. Here's a picture of Energy Advisor Mark Tyler during a quiet moment.



## CSE energy advisors take to the airwaves to discuss health effects of fuel poverty

Two energy advisors from the Centre for Sustainable Energy (CSE) took to the airwaves to help spread the word about the dangers of living in the cold and the effects it can have on people's health.

Helen Richardson and Liz Dagger from CSE appeared on Radio Ujima, a local community radio station serving the mixed communities of central Bristol, and were interviewed as part of an hour-long health programme.

The aim was to explain to local people the risks of living in under-heated homes and to let them know about the information and support available to them. This included providing advice about loft and cavity wall insulation and how it can help to improve the comfort of their homes and bring down fuel bills.

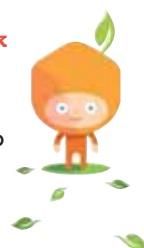
Liz Dagger, Community Outreach Worker at CSE said: "Community radio is a great way of reaching people who are often sidelined by the mainstream media and therefore unaware of the help and advice available to them."



For more about CSE's energy advice outreach, contact Helen Richardson on **0117 934 1432** by email at [helenrichardson@cse.org.uk](mailto:helenrichardson@cse.org.uk)

And why not check out CSE's new energy advice microsite featuring 'Joules' (right)? Go to [www.cse.org.uk/advice](http://www.cse.org.uk/advice)

For free and impartial advice for householders on energy efficiency, renewable energy and transport call your local Energy Saving Trust advice centre on **0800 512 012**



# energise

## A website to be proud of

As part of our 30th anniversary year we are excited to also relaunch a new and improved version of our website – cse.org.uk. Our previous one served us well, but, if we're honest, it was looking a little outdated and tired. The relaunched version is vibrant and colourful and features striking illustrations – specially commissioned by CSE – that make each page come alive. Other advantages of the new site include larger and more pictures, a fun and informative householder advice microsite, a 'portfolio' of featured work, clearer navigation and a content-management system that allows us much greater control over what appears on the site.



The site was built in just a couple of months – quick for a website this size – by design agency 375. Why not take a look? There's even a feedback form for you to leave comment and criticism (yes, we can take it).

And to be kept up to date with what's going on at CSE, you can join the 3,000-plus people who've signed up to our monthly enews. You'll never have to miss another issue of Energise!

## CSE scoops Carbon Positive Award

The 2009 C+ Carbon Positive Awards has recognised CSE as the organisation in the Greater Bristol area which has the most positive influence and impact on climate change (see [www.bitc.org.uk/carbonpositiveawards](http://www.bitc.org.uk/carbonpositiveawards)). Receiving the Carbon Positive Bristol Green Capital Award Chief Executive, Simon Roberts, said: "It's great to be recognized



in this way in the year of our 30th anniversary. Delivering effective sustainable energy initiatives in and around Bristol has been a centre-piece of our work since the beginning. We're very proud of our award-winning achievements"

## Staff news

A warm welcome to new colleagues: **Jenny Bull, Heather Crane, Phillip Morris, Beverley Davidson, Bridget Newbery and Madlen Hutton**. At the same time, it's farewell and good luck to **Gaynor Lewis, Claire Chambers, Helen Cooper, Rebecca Waite and Trudy Dove** all of whom have left this year. And, finally, congratulations to CSE's Chief Executive, **Simon Roberts**, who has recently been elected as a Fellow of the RSA – the Royal Society for the Encouragement of Arts, Manufactures and Commerce.

## Centre for Sustainable Energy

*Switched on since 1979*

We are an independent national charity that shares our knowledge and experience to help people change the way they think and act on energy. We offer:

- training in sustainable energy
- impartial energy advice
- community-based initiatives
- educational resources
- research and consultancy
- policy analysis

*Energise is produced 2-3 times a year and distributed free on request*

## Who's who at CSE

### Chief Executive

Simon Roberts

### Advice, Education & Community Initiatives

Sarah Davies (Head of Advice, Education & Community Initiatives)\*; Elspeth Banks (Energy Advisor); Danielle Barrett (Project Worker); Jenny Bull (Energy Advisor); Heather Crane (Energy Advisor); Liz Dagger (Community Outreach Worker); Morgan Griffin (Energy Advisor); Sarah Jeffrey (Energy Advice Services Manager)\*; Karen Lansdown (Senior Project Worker); Chloe Lemoult-Wasserman (Energy Advisor); Lucy Lloyd-Price (Community Project Manager); Michael McClelland (Warm Streets Administrator); Phillip Morris (Project Manager); Bridget Newbery (Project Manager); Lisa Pinchen (Senior Energy Advisor); Helen Richardson (Energy Advice Services Manager); Louise Rutterford (Project Manager); Pauline Sandell (Fuel Poverty Advisor); Verity Saunders (Senior Project Manager); Mark Tyler (Energy Advisor); Jamie Walters (Project Officer)

### Research & Policy Analysis

Joshua Thumim (Head of Research & Policy Analysis); Will Anderson (Senior Researcher); Ian Preston (Senior Analyst); Zoe Redgrove (Project Officer); Vicki White (Senior Research Worker)

### Technical Consultancy & Training

Simon Lewin (Head of Technical Consultancy & Training); Stephen Andrews (Senior Technical Project Worker); Beverley Davidson (Trainer); Louisa Haines (Project Manager)\*; Madlen Hutton (Project Manager); Martin Holley (Senior Technical Project Manager); Anna Watts (Lead Trainer)

### Development and Communications

Janine Michael (Head of Development); Rachel Coxcoon (Senior Development and Project Manager); Matthew Rees (Communications & Publicity Officer); Jonathan Twomey (Senior Development Manager); Tim Weisselberg (Communications & Publicity Manager)

### Finance & Human Resources

Sarah Frankish (Head of Finance & Human Resources); Jane Harris (Office Assistant); Kirsty Mitchell (Office Administrator); Julia Stephens-Parr (Financial Administrator)

\* Currently on maternity leave



Centre for Sustainable Energy  
3 St Peter's Court  
Bedminster Parade  
Bristol BS3 4AQ

0117 934 1400 TELEPHONE  
0117 934 1410 FAX

info@cse.org.uk EMAIL



Printed on Take 2 offset, an uncoated, chlorine-free paper made from 100% recycled fibres from post-consumer waste.

Printed by Doveton Press, Willway Street, Bristol